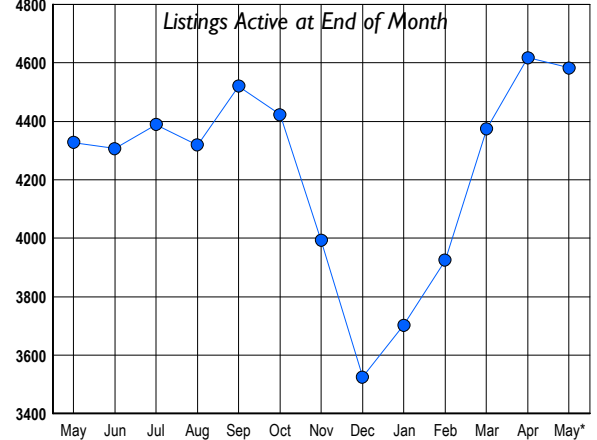




LISTINGS

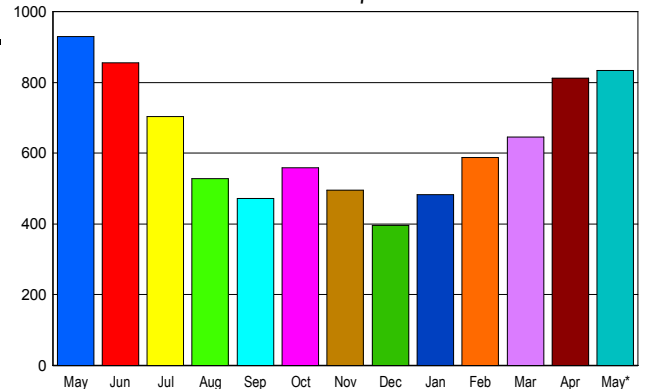
Prices Range	New This Month			Total Actives		
	2008	2007	% Change	2008	2007	% Change
0 - 149,999	6	0	600.0	17	4	325.0
150,000 - 199,999	21	0	2,100.0	70	4	1,650.0
200,000 - 299,999	204	85	140.0	662	188	252.1
300,000 - 399,999	333	397	-16.1	1,068	802	33.2
400,000 - 499,999	233	412	-43.4	803	1,077	-25.4
500,000 - 599,999	180	319	-43.6	496	700	-29.1
600,000 - 699,999	137	187	-26.7	344	395	-12.9
700,000 - 799,999	92	137	-32.8	237	272	-12.9
800,000 - 899,999	83	83	0.0	179	190	-5.8
900,000 - 999,999	50	47	6.4	101	113	-10.6
1,000,000 - 1,249,999	49	58	-15.5	158	145	9.0
1,250,000 - 1,499,999	62	75	-17.3	147	156	-5.8
1,500,000 +	83	108	-23.1	300	281	6.8
TOTALS	1533	1908	-19.7	4582	4327	5.9

INVENTORY TREND



SALES TREND

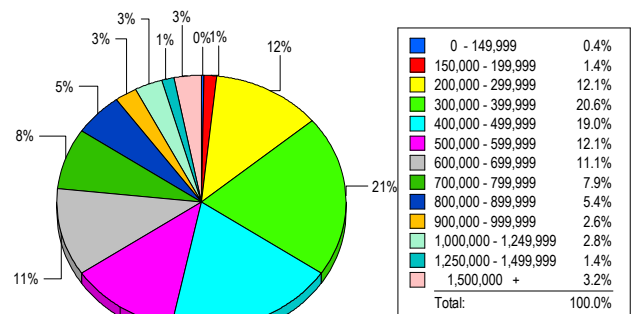
Contracts Ratified Per Month



CONTRACTS

Price Range	New This Month			Year-To-Date		
	2008	2007	% Change	2008	2007	% Change
0 - 149,999	2	0	200.0	4	1	300.0
150,000 - 199,999	26	0	2,600.0	64	4	1,500.0
200,000 - 299,999	117	53	120.8	416	210	98.1
300,000 - 399,999	183	168	8.9	738	805	-8.3
400,000 - 499,999	118	217	-45.6	558	888	-37.2
500,000 - 599,999	109	139	-21.6	403	578	-30.3
600,000 - 699,999	72	101	-28.7	277	452	-38.7
700,000 - 799,999	63	72	-12.5	219	305	-28.2
800,000 - 899,999	44	49	-10.2	144	202	-28.7
900,000 - 999,999	27	28	-3.6	90	113	-20.4
1,000,000 - 1,249,999	18	31	-41.9	98	134	-26.9
1,250,000 - 1,499,999	30	33	-9.1	104	119	-12.6
1,500,000 +	25	39	-35.9	111	163	-31.9
TOTALS	834	930	-10.3	3226	3974	-18.8

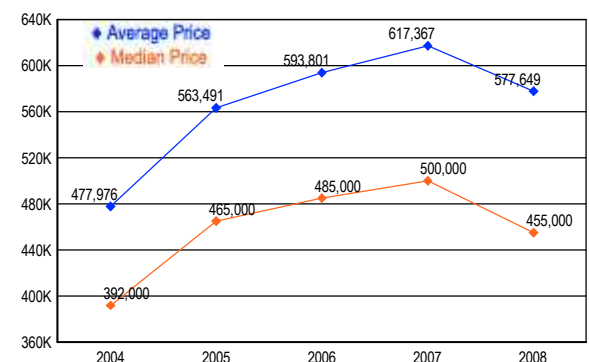
MARKET BY PRICE RANGE



SETTLEMENTS

Price Range	New This Month			Year-to-Date		
	2008	2007	% Change	2008	2007	% Change
0 - 149,999	2	0	200.0	3	1	200.0
150,000 - 199,999	8	0	800.0	30	4	650.0
200,000 - 299,999	69	43	60.5	276	168	64.3
300,000 - 399,999	117	136	-14.0	581	747	-22.2
400,000 - 499,999	108	158	-31.6	441	788	-44.0
500,000 - 599,999	69	102	-32.4	288	500	-42.4
600,000 - 699,999	63	80	-21.3	228	371	-38.5
700,000 - 799,999	45	53	-15.1	133	225	-40.9
800,000 - 899,999	31	37	-16.2	104	142	-26.8
900,000 - 999,999	15	24	-37.5	61	93	-34.4
1,000,000 - 1,249,999	16	20	-20.0	76	101	-24.8
1,250,000 - 1,499,999	8	21	-61.9	61	80	-23.8
1,500,000 +	18	37	-51.4	84	120	-30.0
TOTALS	569	711	-20.0	2366	3340	-29.2

AVERAGE & MEDIAN PRICE



DATA SOURCE: Metropolitan Regional Information Systems, Inc. (MRIS)

NOTES: Properties not listed through this Multiple Listing Service are not reflected. The term "sales" represents ratified purchase contracts. Current year information is preliminary and subject to revision. Current year-to-date contract information may not equal the sum of the monthly contract totals reported in